

Kjære lille Julie

TEKST&MUSIKK: Robert Birkeland ©1981/2019

♩ = 114 (intro)

MELODI

A

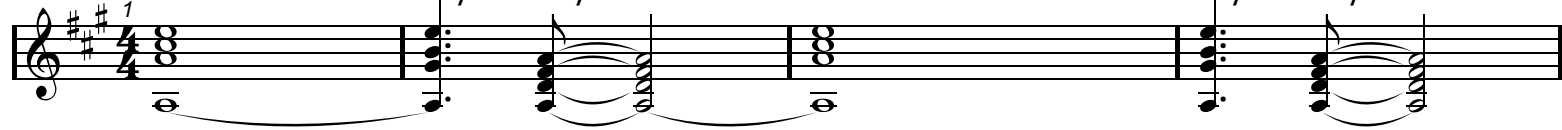
E/A

D/A

A

E/A

D/A



Mel.

A

E

A

D

A

E



1.vers: Kjæ - re lil - le Jul - lie, skynd deg å bli stor.

Mel.

A

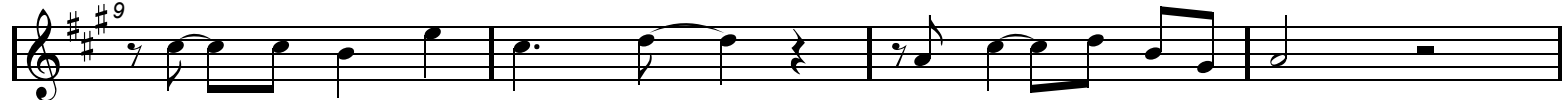
E

F#min D

A

E

A

A⁷

Tar - jei han vil le - ke, ja tenk han er din bror.

Mel.

D

G

A

D

Bmin

G \flat

G

G



Han blir med på fer - den på vår sto - re jord.

Mel.

D

A

E

A

D

E



Tenk du var så held - dig, for han bor, der du

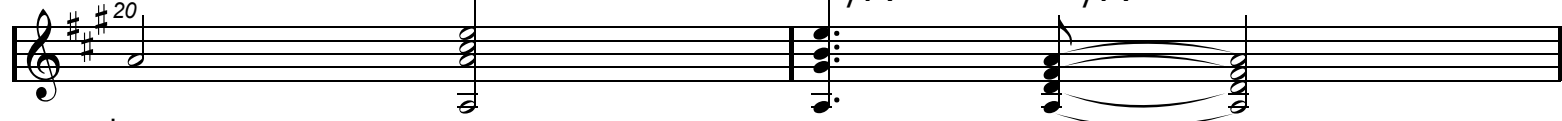
Mel.

A

(intro)

E/A

D/A



bor.

Mel.

A

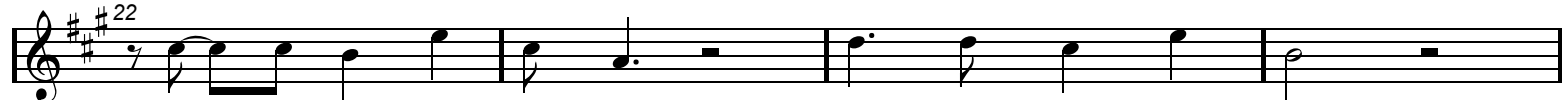
E

A

D

A

E



2.vers: Når så kvel - en kom - er, før du sov - ner inn,

Mel.

A

E

F#min D

A

E

A

A⁷

er du of - te lek - en, og sprud - len - de i sinn. Du

Mel.

D

G

A

D

Bmin

G \flat

G

G



spret - ter rundt på gul - vet og ler mot Ru - di - pus

Kjære lille Julie

RB#024

TEKST&MUSIKK: Robert Birkeland ©1981/2019

Mel. D A E A D E

34

For en prakt - ful jen - te, vi fikk i vårt

Detailed description: This block contains the first line of music, measures 34 to 36. The melody is written in treble clef with a key signature of two sharps (D major). Above the staff, the chords D, A, E, A, D, and E are indicated. The lyrics are 'For en prakt - ful jen - te, vi fikk i vårt'.

Mel. A (intro) E/A D/A

37

hus.

Detailed description: This block contains the second line of music, measures 37 to 38. The melody is written in treble clef. Above the staff, the chords A (intro), E/A, and D/A are indicated. The lyrics are 'hus.'.

Mel. A E A D A

39

3.vers: Kjæ - re lil - le Jul - ie så fikk du din

Detailed description: This block contains the third line of music, measures 39 to 41. The melody is written in treble clef. Above the staff, the chords A, E, A, D, and A are indicated. The lyrics are '3.vers: Kjæ - re lil - le Jul - ie så fikk du din'.

Mel. E A E F#min D A E

42

Sang. Den har lagt og vent - et til du kom en

Detailed description: This block contains the fourth line of music, measures 42 to 44. The melody is written in treble clef. Above the staff, the chords E, A, E, F#min, D, A, and E are indicated. The lyrics are 'Sang. Den har lagt og vent - et til du kom en'.

Mel. A A7 D G A D Bmin Gb

46

Gang. Gle - der de skal kom - me sor - ger kan du

Detailed description: This block contains the fifth line of music, measures 45 to 47. The melody is written in treble clef. Above the staff, the chords A, A7, D, G, A, D, Bmin, and Gb are indicated. The lyrics are 'Gang. Gle - der de skal kom - me sor - ger kan du'.

Mel. G G D A E D A D E

50

få. My - e vil nok glem - es, men din Sang vil be -

Detailed description: This block contains the sixth line of music, measures 48 to 50. The melody is written in treble clef. Above the staff, the chords G, G, D, A, E, D, A, D, and E are indicated. The lyrics are 'få. My - e vil nok glem - es, men din Sang vil be -'.

Mel. A (outro) E/A D/A A E/A D/A A

54

stå.

Detailed description: This block contains the seventh line of music, measures 51 to 54. The melody is written in treble clef. Above the staff, the chords A (outro), E/A, D/A, A, E/A, D/A, and A are indicated. The lyrics are 'stå.'.